

1

2

3

4

5

6

A

B

C

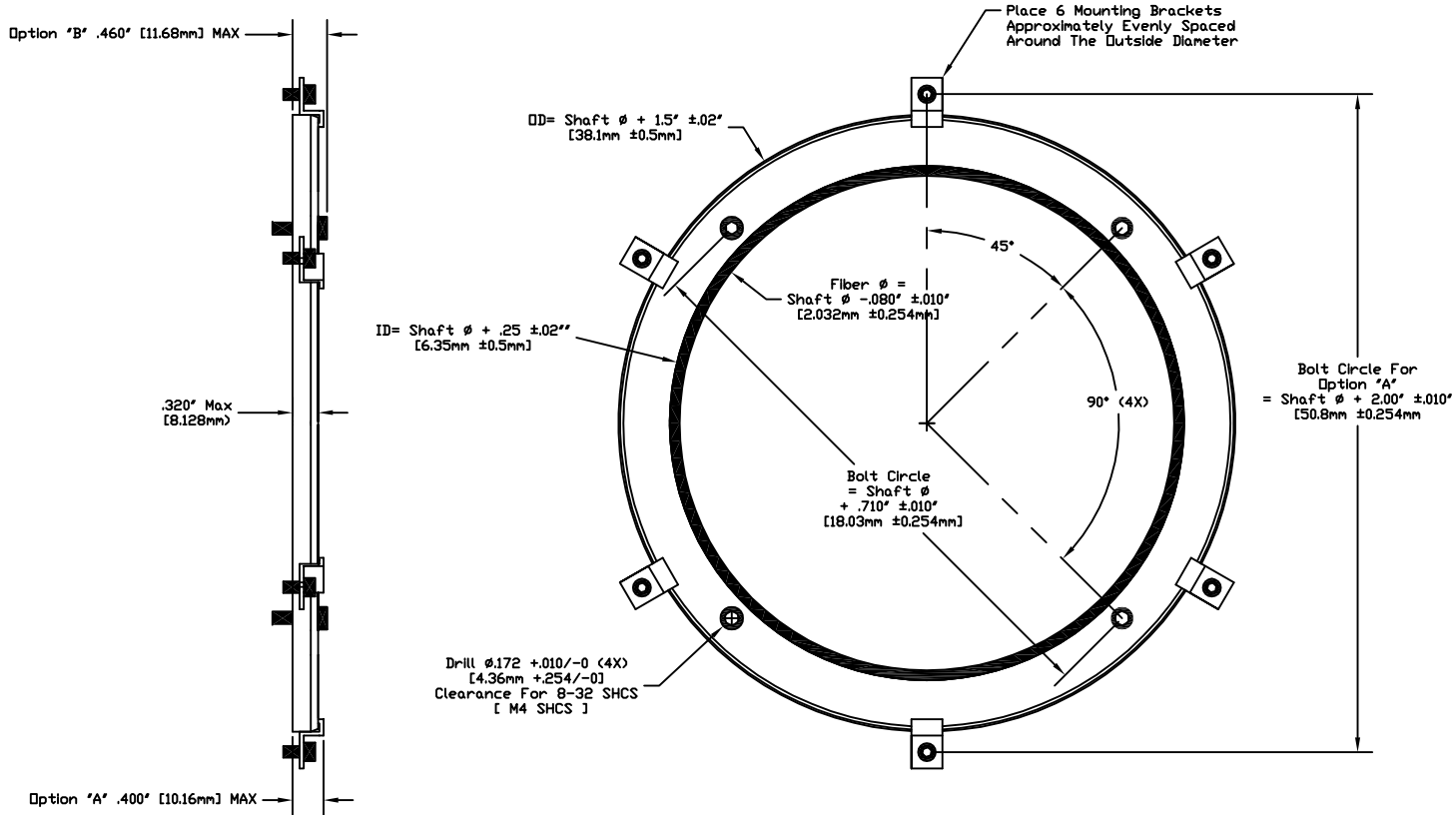
D

A

B

C


D



Note
 This Drawing Is For All Solid SGRs With Shaft Diameters >6" [153mm] to 15.748" [400.0mm]
 Large SGR's To Be Supplied With 2 Mounting Options
 Option "A": (-1) 6, Standard Mounting Brackets 6, 6-32 X 1/4 SHCS With Star Washers
 Option "A": (-2) 6, Standard Mounting Brackets 6, M3 X 8mm SHCS With Star Washers
 Option "B": (-1) 4, 8-32 X 1/2 SHCS With Lock Washers.
 Option "B": (-2) 4, M4 X 12mm SHCS With Lock Washers.

Patented Technology

THEREIN, ARE THE EXCLUSIVE PROPERTY OF ELECTRO STATIC TECHNOLOGY ISSUED IN STRICT CONFIDENCE AND SHALL NOT WITHOUT CONSENT, BE REPRODUCED, COPIED OR USED FOR ANY PURPOSE WHATSOEVER, EXCEPT BUSINESS WITH E.S.T.

UNLESS OTHERWISE SPECIFIED			ELECTRO STATIC TECHNOLOGY AN ITW COMPANY	
DIMENSIONS ARE IN				
MILLIMETERS	<input checked="" type="checkbox"/>		31 WINTERBROOK ROAD, MECHANIC FALLS, MAINE 04256 PHONE (207)998-5140 FAX (207)998-5143	
INCHES	<input checked="" type="checkbox"/>	Large SGR Assembly		
UNTOLERANCED DIMENSIONS		DATE: 7/23/2012		
+/- .02" [+/- 0.5mm]		ENGINEER: J Richardson		Rev. E
		DRAWING NO.		

1

2

3

4

5

6